



## Flexible configuration

Customized configuration with best performance

## Diversity of interface

Support RS232, USB

## Best value price

High CPU performance with only 8 bits CPU price

## Ultra comfort design

Perfect human engineering design, ultra comfort with lifetime use

## High performance CPU

Excellent performance in decoding and error correcting capacity

## Diversified customized features

Great match for customer applications, greatly improve work efficiency

## Complement checking code for barcode data and command

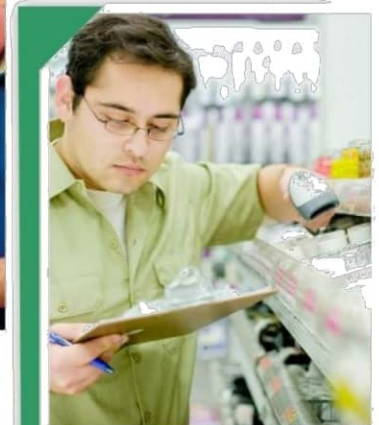
More secure for data and command transfer

## Creative user defined barcode technology

User defined barcode binding with unique ID barcode scanner

## Application and Solution

Clothing, retail chain store, warehouse management, e-business, commercial retail, logistics express and file management, etc



# Basic Product Specifications

## Operating indicators:

**Visual :** 1 LED ( Blue )

**Non-visual:** Buzzer

## Communications

**Communication :** USB , RS232

## Power

**Voltage requirement :** 5V± 10%

**Current consumption :** 85mA (typical use),max.150mA

## Barcode scanner Options

**Light source :** 650nm visible laser diode

**Scan method :** Bi-directional scanning

**Scan rate :** 100scans/sec

**Trigger mode :** Manual, multiple read, continuous read, auto-trigger, serial software trigger

**Reading pitch angle :** (pitch)-50 to 0°, 0 to +50°

(skew)-65 to 0°, 0 to +65°

(tilt)-35 to 0°, 0 to +35°

**Curvature :** R>15 mm (EAN8) , R>20 mm (EAN13)

**Min. resolution :** PCS 0.9: 0.101 mm / 4 mil, Min. PCS value: 0.35

## Physical

**Dimensions :** 90.5 x 69.8 x 160 mm

3.56 x 2.75 x 6.30 in (d x w x h)

**Weight body :** 146g/ 5.15 oz (excl. cable)

**Case :** PC, Black or Grey

## Durability

**Temperature :** -20°to 65°C / -4°to 149°F(operation)

-30°to 70°C /-22°to 158°F(storage)

**Humidity :** 20 - 85% (operation), 20 - 90% (storage)

**Ambient light immunity :** Fluorescent 3000 lx max, Direct sun 50,000 lx max,

Incandescent 3000 lx max

**Drop test :** 1.5m/5ft drop onto concrete surface

**Protection rate :** IP 54

## Regulatory & Safety

**Product compliance :** IEC 60825, UL 60950, EN/IEC 60950, FCC Part 15 Class

B, EN 55024/CISPR 22, AS 3548, VCCI, RoHS Compliant, GB7247.1-2001

**Enclosed items :** Cable(USB), User Guide



## Supported Symbologies

### Barcode(1D)

EAN13 , EAN8 , UPC-A , UPCE , CODABAR(NW-7) ,

CODE39 , CODE93

INTERLEAVED\_2OF5 , STANDARD\_2OF5 ,

MATRIX\_2OF5 , CODE128 , EAN128(GS1-128) ,

CODE11 , CHINESE\_POST

### PCS 0.9 Code 39

70 - 650 mm / 2.76 - 25.59 in (1.0 mm / 39 mil),

50 - 420 mm / 1.97 - 16.54 in (0.5 mm / 20 mil),

50 - 260 mm / 1.97 - 10.24 in (0.25 mm / 10 mil),

50 - 150 mm / 1.97 - 5.91 in (0.15 mm / 6 mil),

60 - 120 mm / 2.36 - 4.72 in (0.127 mm / 5 mil)

50 - 110 mm / 1.97 - 4.33 in (0.101 mm / 4 mil)

## Depth of field

